



# GAT MONTHLY MEMBERSHIP PROGRESS REPORT

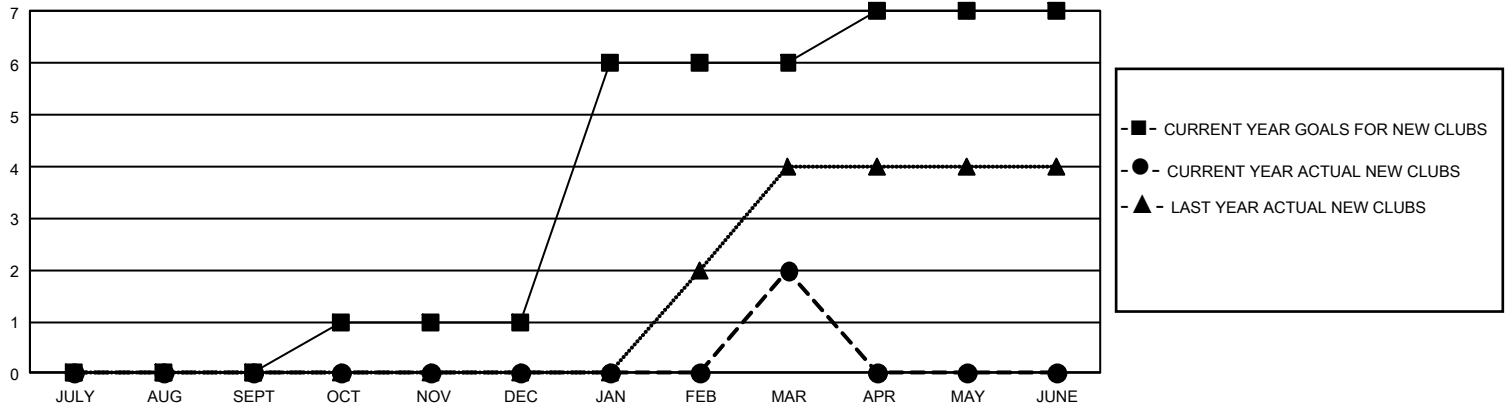
Results as of: 3/31/2025

## GMT Constitutional Area 5 - J, Group H

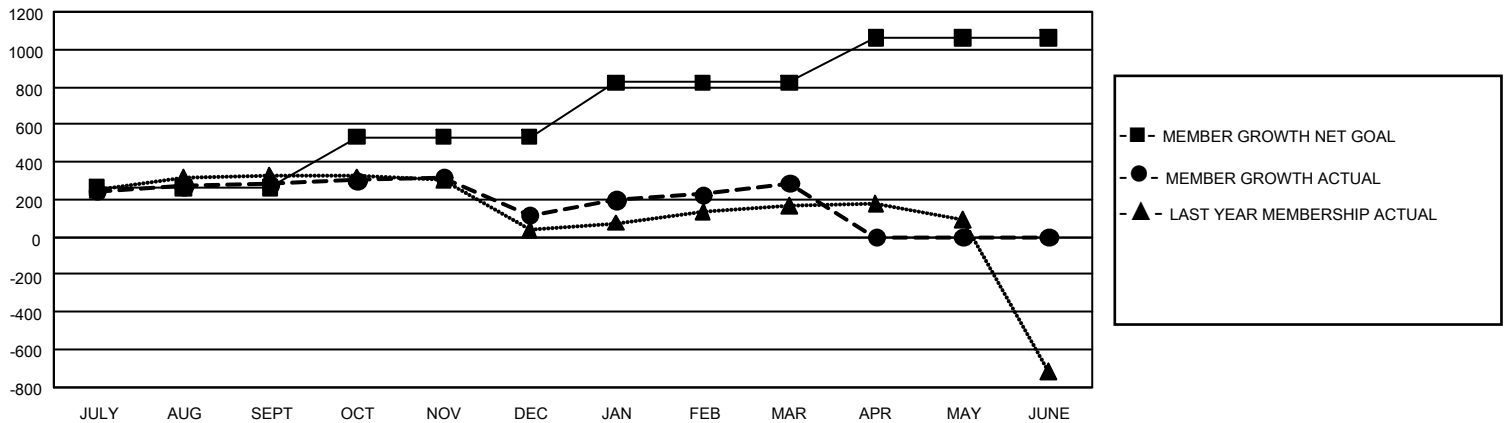
REPORT DOES NOT INCLUDE CLUBS IN UNDISTRICTED AREAS.

Clubs				Members			
RESULTS FOR 2024-2025				RESULTS FOR 2024-2025			
QUARTER	NEW CLUB GOAL	NEW CLUBS	DROPPED CLUBS	QUARTER	MEMBER GROWTH NET GOAL	MEMBER GROWTH ACTUAL	DROPPED MEMBERS ACTUAL (including transfers)
JULY/AUG/SEPT	0	0	1	JULY/AUG/SEPT	262	547	232
OCT/NOV/DEC	3	0	0	OCT/NOV/DEC	270	183	334
JAN/FEB/MAR	15	2	1	JAN/FEB/MAR	290	429	223
APR/MAY/JUNE	3	0	0	APR/MAY/JUNE	238	0	0

GOALS AND ACTUAL NEW CLUBS CUMULATIVE



GOALS AND ACTUAL MEMBERS CUMULATIVE



DROPPED CLUBS: 2

277 CLUBS OF 382 ADDED 1 OR MORE NEW MEMBERS

### GENDER DISTRIBUTION

MALE	13,244 (74.85%)
FEMALE	4,446 (25.13%)
NON BINARY	0 (0.00%)
PREFER NOT TO ANSWER	5 (0.03%)

### DROPPED MEMBERS

DECEASED	108
CLUB CANCELLED	0
OTHER	655
<b>TOTAL</b>	<b>763</b>

[CLICK HERE FOR CUMULATIVE MEMBERSHIP DATA](#)

TOTAL FAMILY UNIT MEMBERS	0
FAMILY MEMBERS PAYING HALF DUES	0